

**Attachment 1:** Maps to show West Vadnais Lake and Ramsey-Washington Metro Watershed inlet into West Vadnais Lake and reentry into Ramsey-Washington Metro Watershed at the lake outlet.

West Vadnais Subwatershed Area within VLAWMO



Map ID	Location
1	In-Lake Vegetation Clean-Out
2	Vadnais Blvd Twin Pipes
3	West Vadnais Lake Overflow Bypass System
4	West Vadnais Lake Outlet
5	West Vadnais Lake Auto Lake Level Monitoring Station

Grass Lake Subwatershed that flows directly into West Vadnais Lake (from RWMWD's WMP)

Twin Lakes Subwatershed that directly received flow from West Vadnais Lake (from RWMWD's WMP)

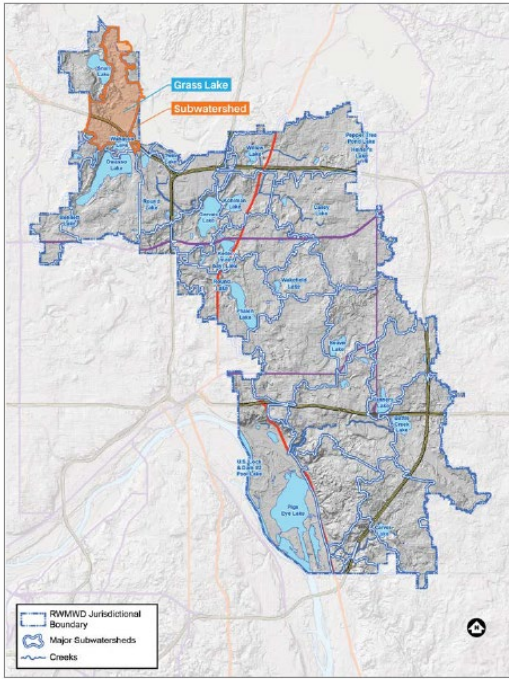


Figure 2.19-1 Grass Lake Location Map

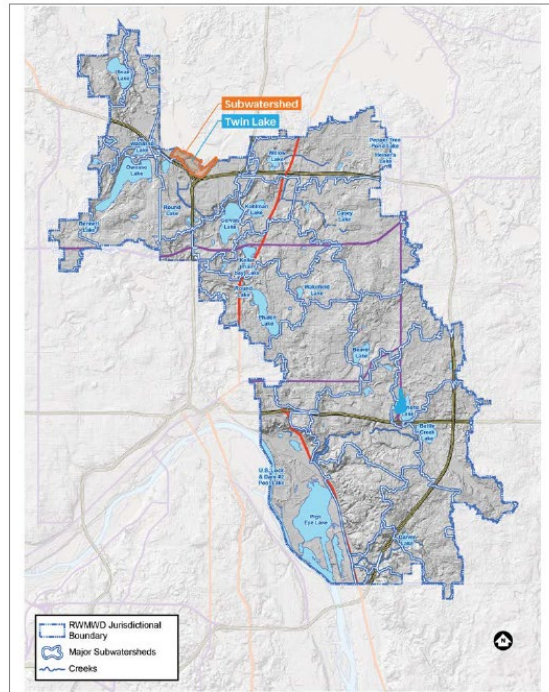


Figure 2.4-1 Twin Lake Location Map



A closer look at drainage from the Grass Lake Subwatershed into West Vadnais Lake

